

PRESS RELEASE



ELARA LN05A

The new active floorstanding speaker by TRIANGLE



GET MORE EMOTION

Following the success of the recent LN01A speakers, the French manufacturer TRIANGLE enlarges its Active Serie range and presents a new amplified speaker: LN05A.

Built on the legacy of the ELARA range, the LN05A is a compact floorstanding speaker awarded by the Hi-Fi press. The passive version has very recently been awarded a Diapason d'or 2017. This floorstanding is equipped with a 25mm fabric dome tweeter and two 13cm concave drivers.

The active speaker integrates a Class-D amplification module of 2X80 watts, and features a band parametric EQ with control over low and high frequencies of the speakers.

SLIM AND POWERFUL

LN05A produces the smooth, warm and detailed sound specific to TRIANGLE. Despite its small volume (90cm high and 16.5cm wide), this speaker offers amazing power for its size thus enabling to deliver sound in rooms of up to 40m².



PLAY ANYTHING, SIMPLY.

TRIANGLE kept the vinyl records enthusiasts in mind. You don't need to add a dedicated pre-amplifier to listen to your favourite music: your vinyl turntable can be directly connected to the speakers through the integrated Phono input.

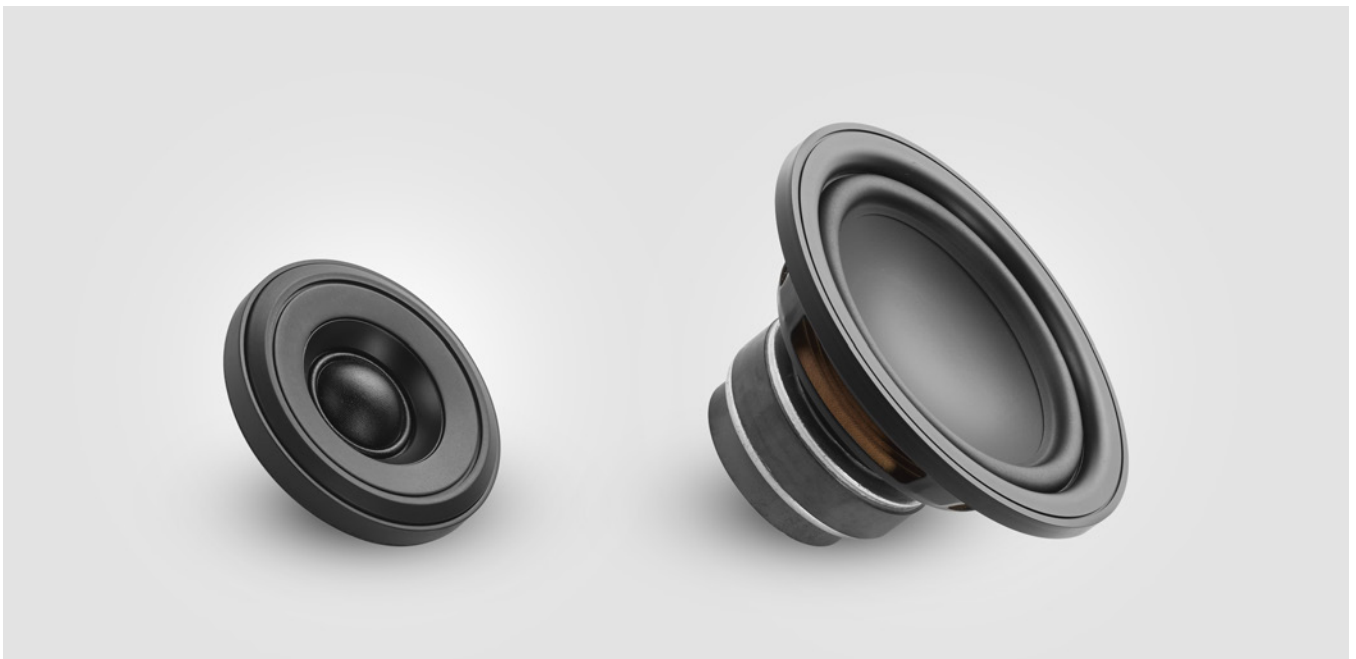
The focus is on connectivity and ease of use. Easy to use and ensuring a remarkable sound quality, the speakers are equipped with a Bluetooth 4.0 AD2P Aptx receiver, offering a sample rate of 16 bit / 44.1kHz, close to CD quality.

These new speakers also feature multiple audio inputs, specific to the models of the active range: optical / coaxial for home theatre set-ups; standard RCA and Jack 3.5mm inputs; and a subwoofer output to add an extra subwoofer.

TRIANGLE'S ACOUSTIC EXPERTISE

The speakers of the Active Serie range integrate a 25mm silk dome tweeter that is central to the characteristic smoothness of the Elara series' sound. Easier to master, silk domes simplify and optimize the speaker configuration. The crossover requires fewer components, while maintaining a flat response in the high frequencies.

The drivers of the range use concave, treated paper membranes. The membranes do not feature dust caps in order to increase their rigidity and efficiency. Elara's optimized cone profile enables the entire woofer surface to be used to transduce sound.



The speakers are available in black or white matt variants at a price of €1249 per pair. They come with a remote control, a power cord and a 5 meters connecting speaker cable to link both speakers together.



TECHNICAL INFORMATION

ELARA	LN05A
Type	Actives, Bass-Reflex
Ways	2.5
Sensitivity (dB/m)	90
Bandwidth (+/-3DB Hz- KHz)	47-22
Power (W)	2x80
Inputs	RCA, AUX, Optical, Phono, Bluetooth 4.0 A2DP aptX
Output	Subwoofer
Dimensions (mm)	165x263x900
Net Weight (kg)	27,3

ADDITIONAL INFORMATION

Website: triangle-fr.com/fr/elara/ln01a
Access to the Marketing site: triangle-marketing.com
Login: triangle001
Password: magellan001

Contact : hugo.decelle@trianglehifi.com

Attached: a set of low definition presentation pictures (optimised for the web). We remain at your disposal should you need any additional information.
